

## PLCVCOM and RFC1006

Starting with PLCVCOM Version 2.38 it is possible to connect to a S7/MPI-LAN with the faster RFC1006 - Protocol. In the Application (f.e: Siemens Step7, PG2000, WinCC) which accesses the PLCVCOM you do not need to change the configuration to use RFC1006. If you could access the PLC's until now, you could work with RFC1006.

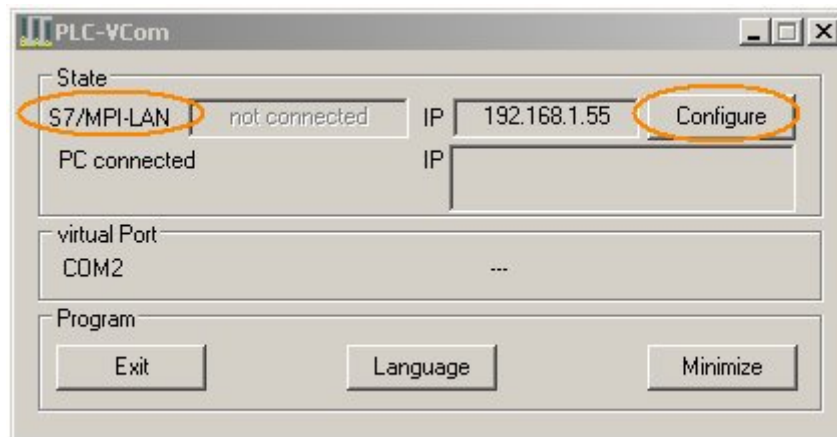
Additionally you then could access the PLC's from 2 or more PC's at the same time over one S7/MPI-LAN.

Attention the Testfunctions are a limited Ressource from the PLC, that means Status Online Viewing of a Block is (mostly) possible on one PC.

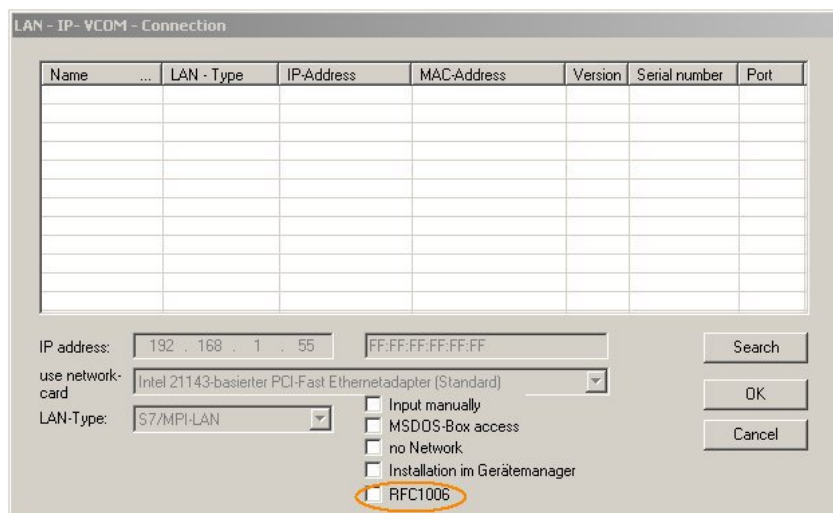
To activate RFC1006, click on the Tray-Icon of the PLCVCOM on the right,bottom side in the Starter-Line, it is situated left from the Clock:



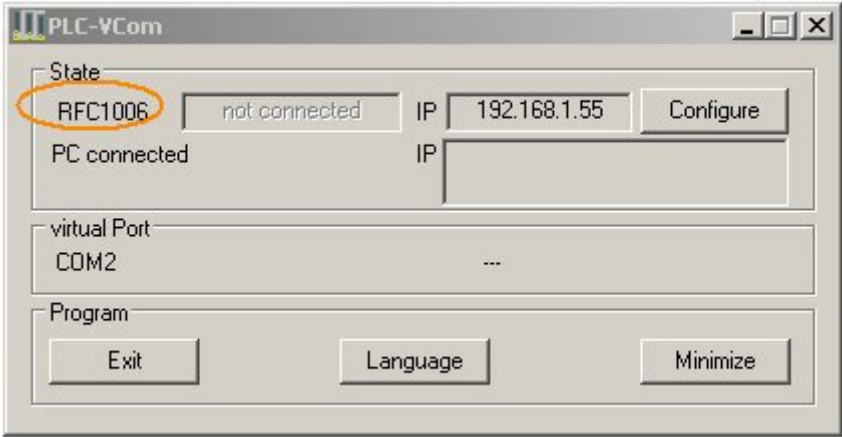
A Dialog appears in which the actual configuration is displayed in short:



Click onto „Configure“ to get into the Configuration:



With the Checkbox „RFC1006“ this mode is activated or deactivated, this Properties are saved permanently when this dialog is closed with a click onto “OK”.  
The summary shows then another state „RFC1006“.



After this Selection the communication is done over RFC1006 to the S7/MPI-LAN.